

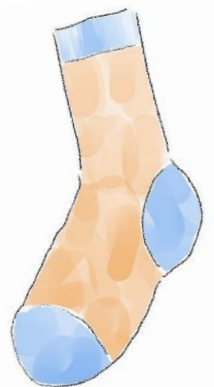
Set-up
 Using black tape, mark lines across width of court at 2 metre intervals.
 Place goal at each end of court.
 Place puck in centre of court.
 Lay a hockey stick each side of puck.

What You Need
 An indoor court
 2 x goals
 1 x Hockey Puck
 2 x Hockey Sticks
 1 x eagle-eyed referee, complete with whistle

Starting the Game

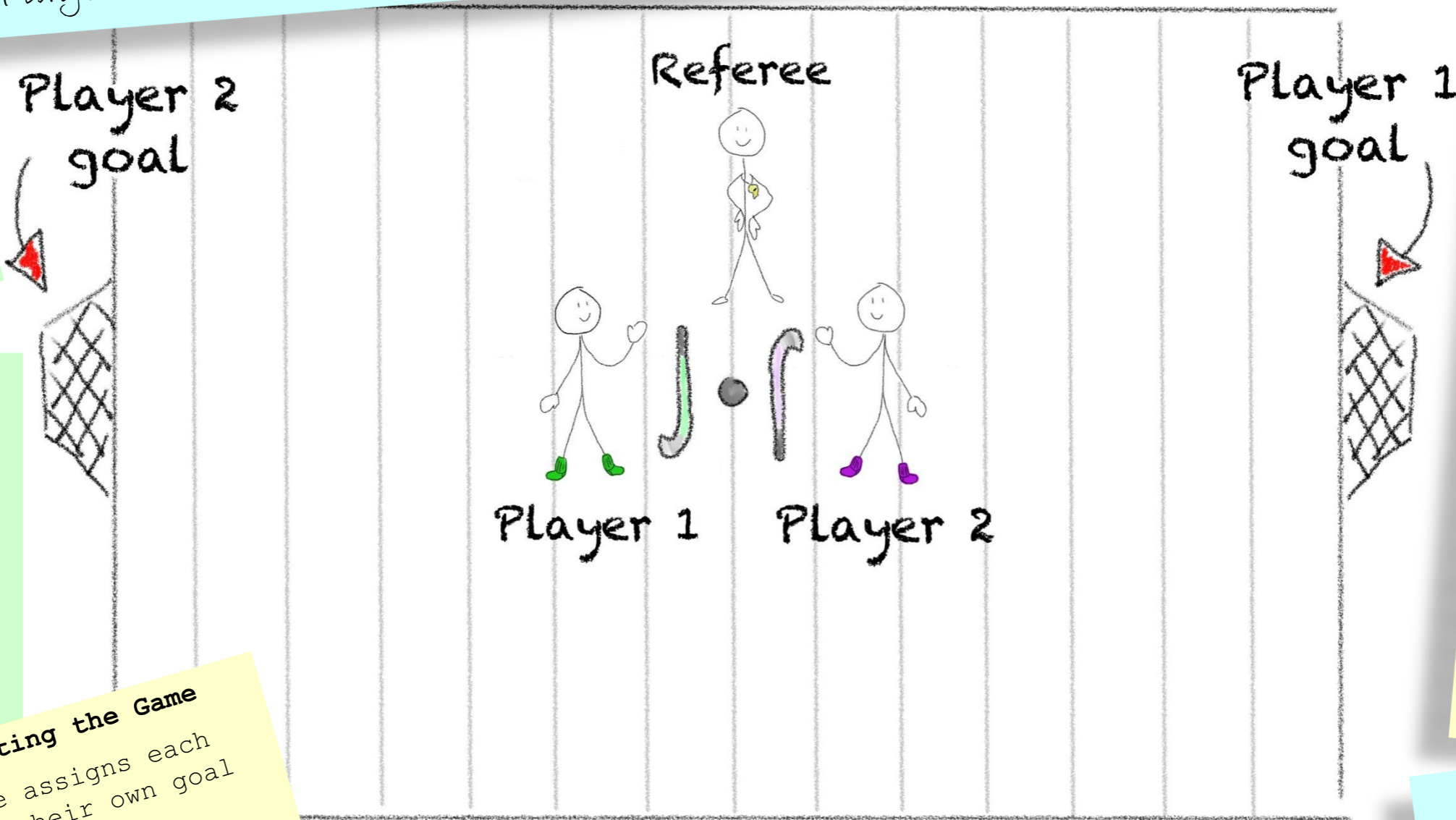
Referee assigns each player their own goal end.
 Players stand beside their stick.
 Referee blows whistle to start match.

Players grab their stick and try to be first to claim the puck by placing the end of their stick in the central hole.



Sockey - A game for two players

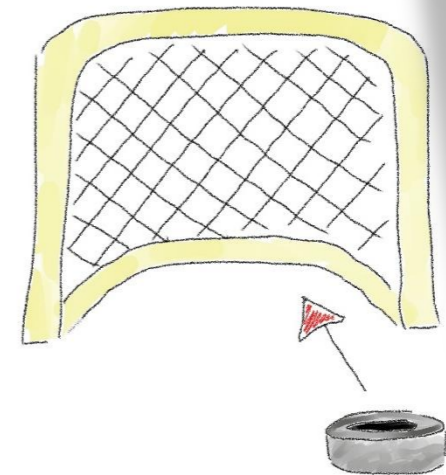
Played wearing socks. NO shoes!!! The aim is to push the puck into the goal.



Lines marked at 2 metre intervals

Playing the Game

Whoever claims the puck attempts to push it into their goal.
 The other player tries to prevent this by stealing the puck so that they may push it into their own goal instead.



Rules of Play

Players may not hit puck but must push it via its central hole.

Players may not push puck over sideline or backline of court.

Players may not touch on court line markers with their stick.

A player who breaks these rules instantly loses and their opponent wins.

If puck comes to rest on a line marker, player who pushed it there is out and their opponent wins.

Things to Remember!

Choose the perfect socks.
 Avoid socks that are too

- Small
- Loose
- Saggy
- Holey

Or unlucky (for any reason)
 Beware that poor sock choice could lead to disaster!